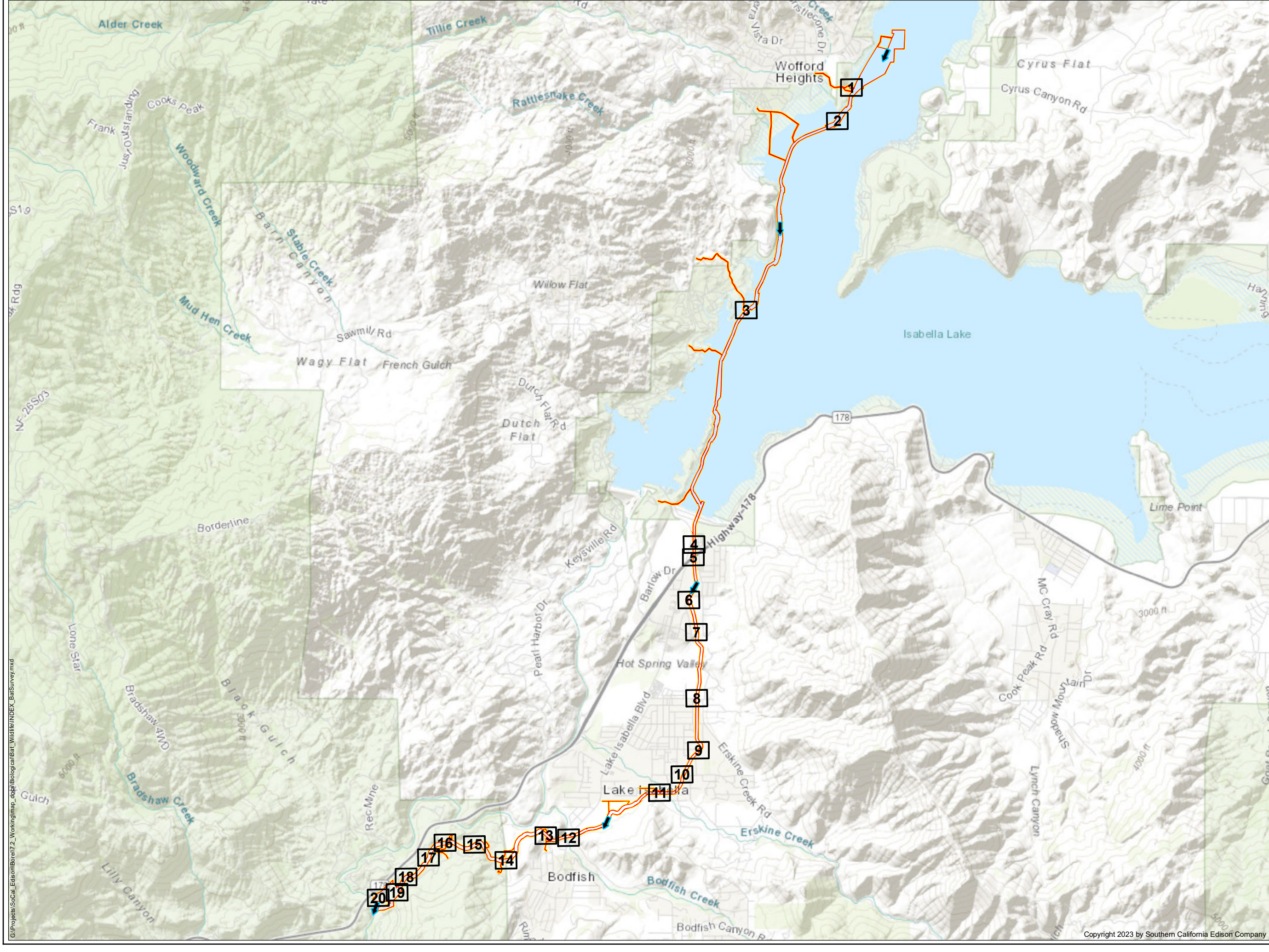


## **Attachment E: Bat Habitat Suitability**

PAGE INTENTIONALLY LEFT BLANK





LEGEND

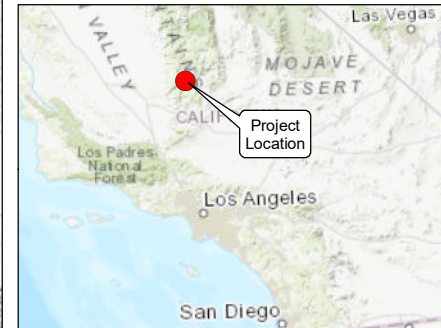
FERC No. 382 Boundary


Survey Area

Map Page Extent

Flow Direction

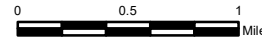

\*SOURCE: HDR (2021), ESRI Topo (2021).



SOUTHERN CALIFORNIA  
**EDISON**<sup>®</sup>  
An EDISON INTERNATIONAL<sup>®</sup> Company

BAT HABITAT SUITABILITY  
OVERVIEW

BOREL HYDROELECTRIC LICENSE SURRENDER PROJECT



Date: 3/30/2023

Projection: StatePlane California V FIPS 0405 Feet  
Datum: NAD 83

Southern California Edison (SCE) has no reason to believe that there are any inaccuracies or defects with information incorporated in this work and make no representations of any kind, including, but not limited to, the warranties of merchantability or fitness for a particular use, nor are any such warranties to be implied, with respect to the information or data, furnished herein. No part of this map may be reproduced or transmitted in any form or by any means, electronic or mechanical, including photocopying and recording system, except as expressly permitted in writing by SCE.

G:\Projects\SoCal\_Edison\Borel\2\_Working\map\_dgs\Biological\Bat\_Wildlife\INDEX\_BatSurvey.mxd

Copyright 2023 by Southern California Edison Company





G:\Projects\SoCal\_Edison\Borel\Y2\_Working\map\_docs\Biological\Bat\_Wildlife\MAPBOOK\_BatSurvey.mxd

**LEGEND**

- FERC Project Boundary #382
- Survey Area
- Borel Canal
- Flow Direction

**Bat Habitat Suitability**

- Possible Bat Roost - No Evidence Present
- Non-suitable Bat Roost - No Evidence Present

\*SOURCE: HDR (2021), SoCal Edison (2021), ESRI Aerial (2021).

**SOUTHERN CALIFORNIA EDISON®**  
An EDISON INTERNATIONAL® Company

**BAT HABITAT SUITABILITY MAP**

BOREL HYDROELECTRIC LICENSE SURRENDER PROJECT  
PAGE 1 OF 20

0 50 100 Feet

Projection: StatePlane California V FIPS 0405 Feet  
Datum: NAD 83

Date: 3/30/2023


Southern California Edison (SCE) has no reason to believe that there are any inaccuracies or defects with information incorporated in this work and make no representations of any kind, including, but not limited to, the warranties of merchantability or fitness for a particular use, nor are any such warranties to be implied, with respect to the information or data, furnished herein. No part of this map may be reproduced or transmitted in any form or by any means, electronic or mechanical, including photocopying and recording system, except as expressly permitted in writing by SCE.








G:\Projects\SoCal\_Edison\Borel\72\_Working\map\_docs\BIOlogicalBat\_Wildlife\MAPBOOK\_BatSurvey.mxd

**LEGEND**


 FERC Project Boundary #382

 Survey Area

 Borel Canal


 Flow Direction

**Bat Habitat Suitability**

 Possible Bat Roost - No Evidence Present

\*SOURCE: HDR (2021), SoCal Edison (2021), ESRI Aerial (2021).

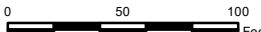





**SOUTHERN CALIFORNIA  
EDISON®**  
An EDISON INTERNATIONAL® Company

**BAT HABITAT  
SUITABILITY MAP**

BOREL HYDROELECTRIC LICENSE SURRENDER PROJECT  
PAGE 2 OF 20



**Projection: StatePlane California V FIPS 0405 Feet**  
**Datum: NAD 83**

Southern California Edison (SCE) has no reason to believe that there are any inaccuracies or defects with information incorporated in this work and make no representations of any kind, including, but not limited to, the warranties of merchantability or fitness for a particular use, nor are any such warranties to be implied, with respect to the information or data, furnished herein. No part of this map may be reproduced or transmitted in any form or by any means, electronic or mechanical, including photocopying and recording system, except as expressly permitted in writing by SCE.



G:\Projects\SoCal\_Edison\Borel\72\_Working\map\_docs\BIOlogicalBat\_Wildlife\MAPBOOK\_BatSurvey.mxd



**LEGEND**

FERC Project Boundary #382

Survey Area

Borel Canal

Flow Direction

**Bat Habitat Suitability**

Possible Bat Roost - No Evidence Present

\*SOURCE: HDR (2021), SoCal Edison (2021), ESRI Aerial (2021).



**SOUTHERN CALIFORNIA EDISON®**  
An EDISON INTERNATIONAL® Company

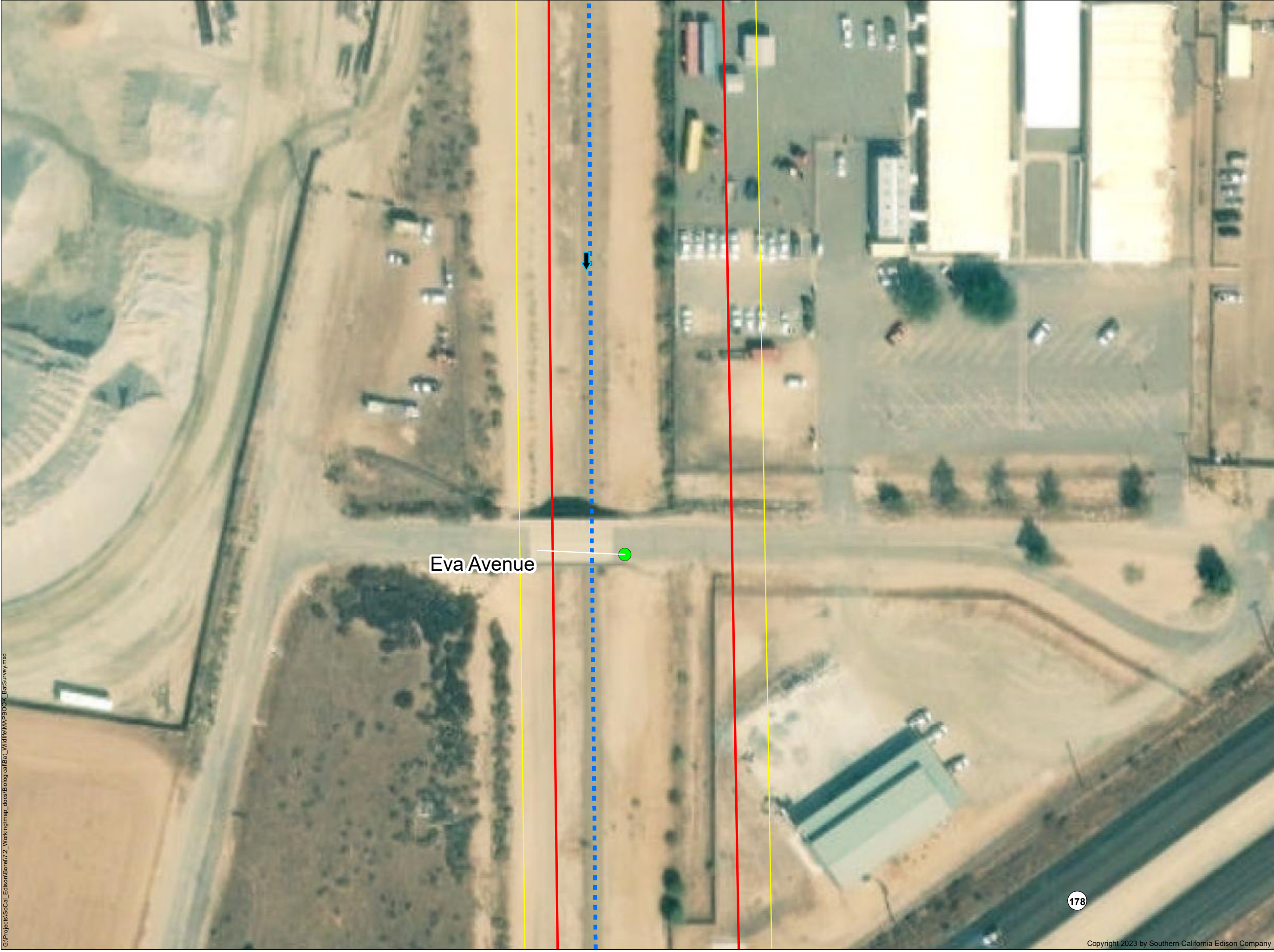
**BAT HABITAT SUITABILITY MAP**

**BOREL HYDROELECTRIC LICENSE SURRENDER PROJECT**  
PAGE 3 OF 20

Date: 3/30/2023  
Projection: StatePlane California V FIPS 0405 Feet  
Datum: NAD 83

Southern California Edison (SCE) has no reason to believe that there are any inaccuracies or defects with information incorporated in this work and make no representations of any kind, including, but not limited to, the warranties of merchantability or fitness for a particular use, nor are any such warranties to be implied, with respect to the information or data, furnished herein. No part of this map may be reproduced or transmitted in any form or by any means, electronic or mechanical, including photocopying and recording system, except as expressly permitted in writing by SCE.





**LEGEND**

FERC Project Boundary #382

Survey Area

Borel Canal


Flow Direction

**Bat Habitat Suitability**

Evidence of Roosting Bats Present

\*SOURCE: HDR (2021), SoCal Edison (2021), ESRI Aerial (2021).



SOUTHERN CALIFORNIA  
**EDISON**<sup>®</sup>  
An EDISON INTERNATIONAL<sup>®</sup> Company

**BAT HABITAT  
SUITABILITY MAP**

BOREL HYDROELECTRIC LICENSE SURRENDER PROJECT  
PAGE 4 OF 20

N

W

E

S

050100  
Feet

Projection: StatePlane California V FIPS 0405 Feet  
Datum: NAD 83

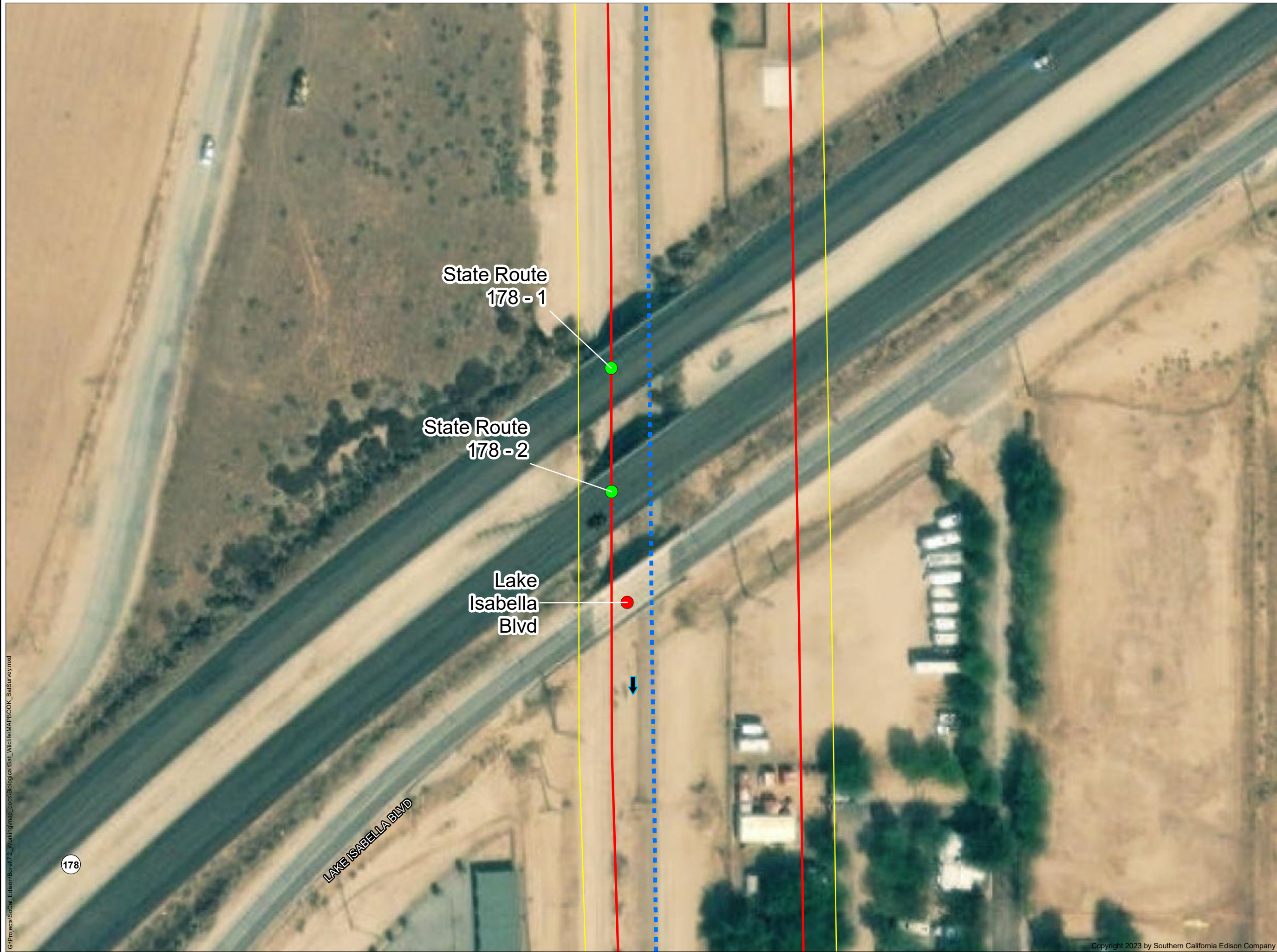
Date: 3/30/2023

Southern California Edison (SCE) has no reason to believe that there are any inaccuracies or defects with information incorporated in this work and make no representations of any kind, including, but not limited to, the warranties of merchantability or fitness for a particular use, nor are any such warranties to be implied, with respect to the information or data, furnished herein. No part of this map may be reproduced or transmitted in any form or by any means, electronic or mechanical, including photocopying and recording system, except as expressly permitted in writing by SCE.

G:\Projects\SoCal Edison\Borel\2\_Working\map\_docs\BIOlogicalBat\_Wildlife\MAPBOOK\_BatSurvey.mxd

Copyright 2023 by Southern California Edison Company





**LEGEND**

- FERC Project Boundary #382
- Survey Area
- Borel Canal
- Flow Direction

**Bat Habitat Suitability**

- Evidence of Roosting Bats Present
- Non-suitable Bat Roost - No Evidence Present

\*SOURCE: HDR (2021), SoCal Edison (2021), ESRI Aerial (2021).

**SOUTHERN CALIFORNIA EDISON®**  
An EDISON INTERNATIONAL® Company

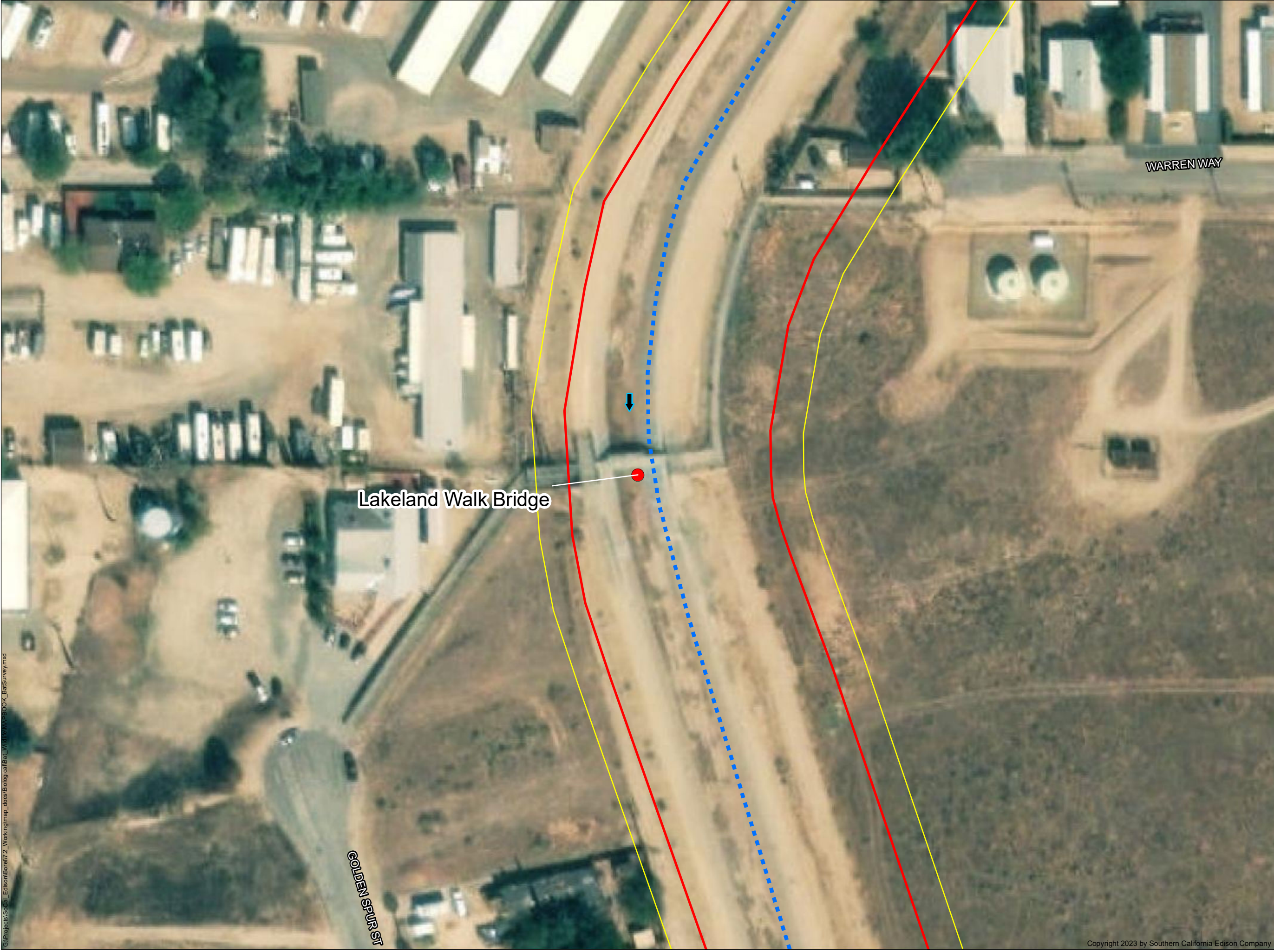
**BAT HABITAT SUITABILITY MAP**

BOREL HYDROELECTRIC LICENSE SURRENDER PROJECT  
PAGE 5 OF 20

Projection: StatePlane California V FIPS 0405 Feet  
Datum: NAD 83  
Date: 3/30/2023

Southern California Edison (SCE) has no reason to believe that there are any inaccuracies or defects with information incorporated in this work and make no representations of any kind, including, but not limited to, the warranties of merchantability or fitness for a particular use, nor are any such warranties to be implied, with respect to the information or data, furnished herein. No part of this map may be reproduced or transmitted in any form or by any means, electronic or mechanical, including photocopying and recording system, except as expressly permitted in writing by SCE.





**LEGEND**

- FERC Project Boundary #382
- Survey Area
- Borel Canal
- Flow Direction

**Bat Habitat Suitability**

- Non-suitable Bat Roost - No Evidence Present

\*SOURCE: HDR (2021), SoCal Edison (2021), ESRI Aerial (2021).



**SOUTHERN CALIFORNIA EDISON®**  
An EDISON INTERNATIONAL® Company

**BAT HABITAT SUITABILITY MAP**

BOREL HYDROELECTRIC LICENSE SURRENDER PROJECT  
PAGE 6 OF 20

Date: 3/30/2023

Projection: StatePlane California V FIPS 0405 Feet  
Datum: NAD 83





Southern California Edison (SCE) has no reason to believe that there are any inaccuracies or defects with information incorporated in this work and make no representations of any kind, including, but not limited to, the warranties of merchantability or fitness for a particular use, nor are any such warranties to be implied, with respect to the information or data, furnished herein. No part of this map may be reproduced or transmitted in any form or by any means, electronic or mechanical, including photocopying and recording system, except as expressly permitted in writing by SCE.

G:\Projects\SoCal Edison\Borel\2\_Working\map\_docs\Biological\Bat\_Wildlife\MAPBOOK\_BatSurvey.mxd





## LEGEND

-  FERC Project Boundary  
 #382  
 Survey Area  
 Borel Canal  
 Flow Direction

## Bat Habitat Suitability

- Non-suitable Bat Roost - No Evidence Present

\*SOURCE: HDR (2021), SoCal Edison (2021)  
ESRI Aerial (2021).

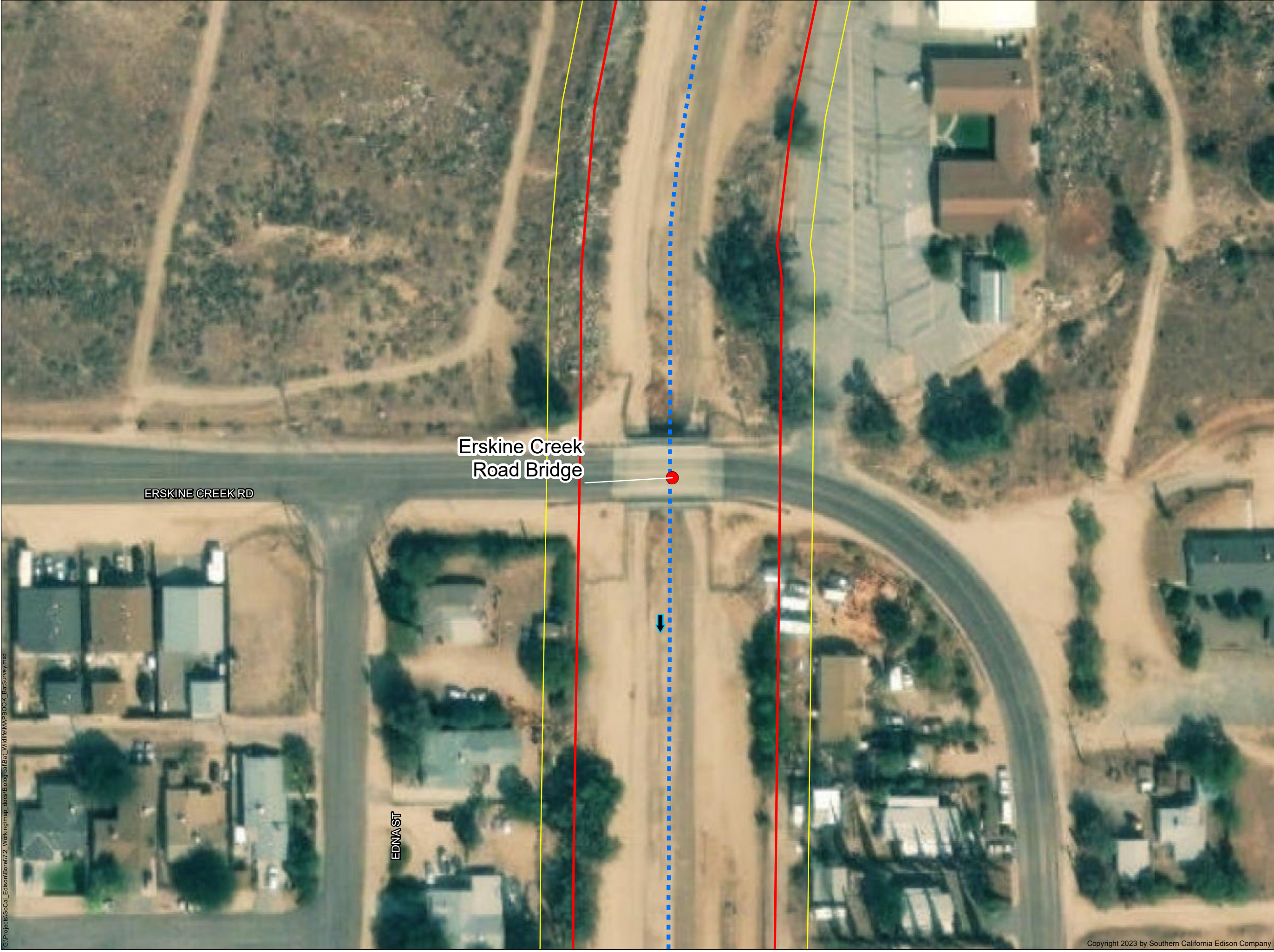


## BAT HABITAT SUITABILITY MAP


BOREL HYDROELECTRIC LICENSE SURRENDER PROJECT  
PAGE 7 OF 20


Southern California Edison (SCE) has no reason to believe that there are any inaccuracies or defects with information incorporated in this work and make no representations of any kind, including, but not limited to, the warranties of merchantability or fitness for a particular use, nor are any such warranties to be implied, with respect to the information or data, furnished herein. No part of this map may be reproduced or transmitted in any form or by any means, electronic or mechanical, including photocopying and recording system, except as expressly permitted in writing by SCE.







**LEGEND**


 FERC Project Boundary #382

 Survey Area

 Borel Canal

 Flow Direction

**Bat Habitat Suitability**

 Non-suitable Bat Roost - No Evidence Present

\*SOURCE: HDR (2021), SoCal Edison (2021), ESRI Aerial (2021).



**BAT HABITAT SUITABILITY MAP**

BOREL HYDROELECTRIC LICENSE SURRENDER PROJECT  
PAGE 8 OF 20



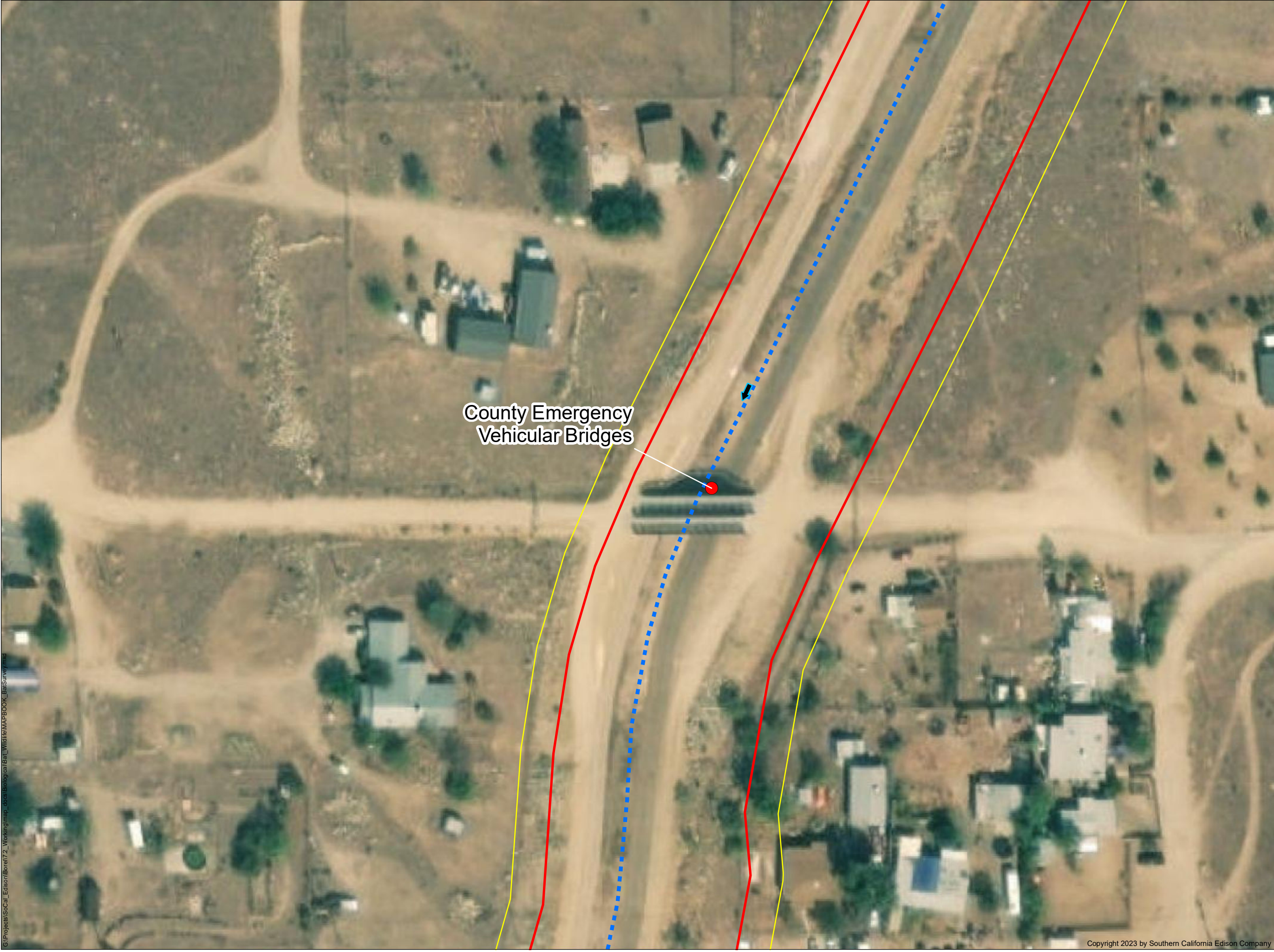
Southern California Edison (SCE) has no reason to believe that there are any inaccuracies or defects with information incorporated in this work and make no representations of any kind, including, but not limited to, the warranties of merchantability or fitness for a particular use, nor are any such warranties to be implied, with respect to the information or data, furnished herein. No part of this map may be reproduced or transmitted in any form or by any means, electronic or mechanical, including photocopying and recording system, except as expressly permitted in writing by SCE.

G:\Projects\SoCal\_Edison\Borel\2\_Working\map\_docs\Biological\Bat\_Wildlife\MAPBOOK\_BatSurvey.mxd









County Emergency  
Vehicular Bridges

**LEGEND**

- FERC Project Boundary #382
- Survey Area
- Borel Canal
- Flow Direction

**Bat Habitat Suitability**

- Non-suitable Bat Roost - No Evidence Present

\*SOURCE: HDR (2021), SoCal Edison (2021), ESRI Aerial (2021).



**BAT HABITAT  
SUITABILITY MAP**

BOREL HYDROELECTRIC LICENSE SURRENDER PROJECT  
PAGE 10 OF 20

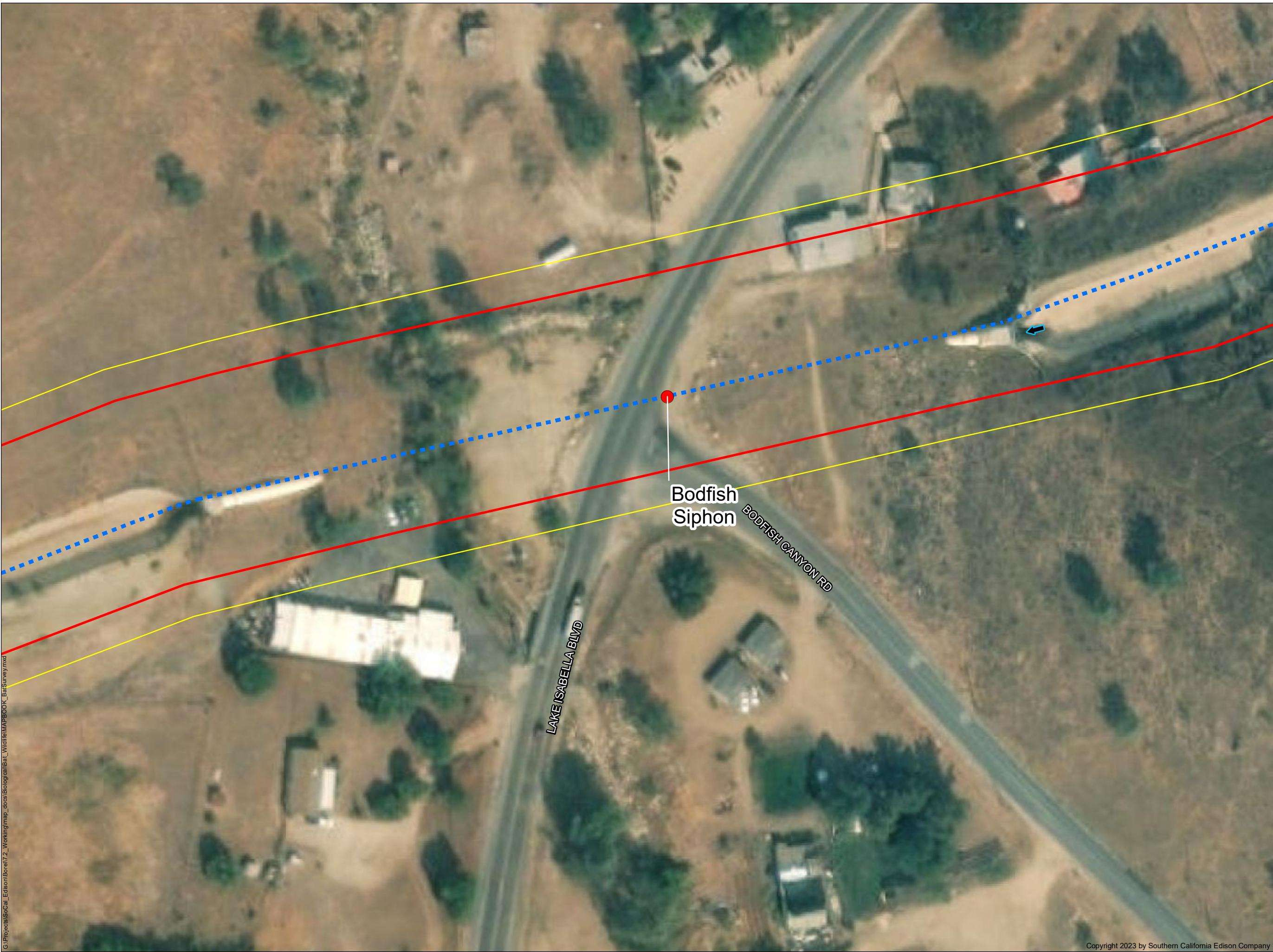


Southern California Edison (SCE) has no reason to believe that there are any inaccuracies or defects with information incorporated in this work and make no representations of any kind, including, but not limited to, the warranties of merchantability or fitness for a particular use, nor are any such warranties to be implied, with respect to the information or data, furnished herein. No part of this map may be reproduced or transmitted in any form or by any means, electronic or mechanical, including photocopying and recording system, except as expressly permitted in writing by SCE.









**LEGEND**

FERC Project Boundary #382

Survey Area

Borel Canal

Flow Direction

**Bat Habitat Suitability**

Non-suitable Bat Roost - No Evidence Present

\*SOURCE: HDR (2021), SoCal Edison (2021), ESRI Aerial (2021).



**SOUTHERN CALIFORNIA  
EDISON®**  
An EDISON INTERNATIONAL® Company

**BAT HABITAT  
SUITABILITY MAP**

BOREL HYDROELECTRIC LICENSE SURRENDER PROJECT

PAGE 12 OF 20



050100  
Feet

Projection: StatePlane California V FIPS 0405 Feet

Datum: NAD 83

Southern California Edison (SCE) has no reason to believe that there are any inaccuracies or defects with information incorporated in this work and make no representations of any kind, including, but not limited to, the warranties of merchantability or fitness for a particular use, nor are any such warranties to be implied, with respect to the information or data, furnished herein. No part of this map may be reproduced or transmitted in any form or by any means, electronic or mechanical, including photocopying and recording system, except as expressly permitted in writing by SCE.

G:\Projects\SoCal Edison\Borel\2\_Working\map\_docs\Biology\Bat\_Wildlife\MAPBOOK\_BatSurvey.mxd

Copyright 2023 by Southern California Edison Company





**LEGEND**

- FERC Project Boundary #382
- Survey Area
- Borel Canal
- Flow Direction

**Bat Habitat Suitability**

- Evidence of Roosting Bats Present

\*SOURCE: HDR (2021), SoCal Edison (2021), ESRI Aerial (2021).



**SOUTHERN CALIFORNIA EDISON®**  
An EDISON INTERNATIONAL® Company

**BAT HABITAT SUITABILITY MAP**  
BOREL HYDROELECTRIC LICENSE SURRENDER PROJECT  
PAGE 13 OF 20

0 50 100 Feet  
Date: 3/30/2023  
Projection: StatePlane California V FIPS 0405 Feet  
Datum: NAD 83

Southern California Edison (SCE) has no reason to believe that there are any inaccuracies or defects with information incorporated in this work and make no representations of any kind, including, but not limited to, the warranties of merchantability or fitness for a particular use, nor are any such warranties to be implied, with respect to the information or data, furnished herein. No part of this map may be reproduced or transmitted in any form or by any means, electronic or mechanical, including photocopying and recording system, except as expressly permitted in writing by SCE.

G:\Projects\SoCal Edison\Borel\2\_Working\map\_does\Biological\Bat\_Middle\MAPBOOK\_BatsSurvey.mxd





**LEGEND**

FERC Project Boundary #382

Survey Area

Borel Canal

Flow Direction

**Bat Habitat Suitability**

Evidence of Roosting Bats Present

\*SOURCE: HDR (2021), SoCal Edison (2021), ESRI Aerial (2021).



**SOUTHERN CALIFORNIA  
EDISON®**  
An EDISON INTERNATIONAL® Company

**BAT HABITAT  
SUITABILITY MAP**

BOREL HYDROELECTRIC LICENSE SURRENDER PROJECT  
PAGE 14 OF 20

050100  
Feet

Projection: StatePlane California V FIPS 0405 Feet  
Datum: NAD 83





Southern California Edison (SCE) has no reason to believe that there are any inaccuracies or defects with information incorporated in this work and make no representations of any kind, including, but not limited to, the warranties of merchantability or fitness for a particular use, nor are any such warranties to be implied, with respect to the information or data, furnished herein. No part of this map may be reproduced or transmitted in any form or by any means, electronic or mechanical, including photocopying and recording system, except as expressly permitted in writing by SCE.

G:\Projects\SoCal Edison\Borel\2\_Working\map\_docs\Biological\Bat\_Wildlife\MAPBOOK\_BatSurvey.mxd






**LEGEND**

-  FERC Project Boundary #382
-  Survey Area
-  Borel Canal
-  Flow Direction

**Bat Habitat Suitability**

-  Evidence of Roosting Bats Present

\*SOURCE: HDR (2021), SoCal Edison (2021), ESRI Aerial (2021).



An EDISON INTERNATIONAL® Company

**BAT HABITAT SUITABILITY MAP**

BOREL HYDROELECTRIC LICENSE SURRENDER PROJECT  
PAGE 15 OF 20



Date: 3/30/2023

0 50 100 Feet

Projection: StatePlane California V FIPS 0405 Feet  
Datum: NAD 83

Southern California Edison (SCE) has no reason to believe that there are any inaccuracies or defects with information incorporated in this work and make no representations of any kind, including, but not limited to, the warranties of merchantability or fitness for a particular use, nor are any such warranties to be implied, with respect to the information or data, furnished herein. No part of this map may be reproduced or transmitted in any form or by any means, electronic or mechanical, including photocopying and recording system, except as expressly permitted in writing by SCE.

G:\Projects\SoCal Edison\Borel\2\_Working\map\_docs\Biological\Bat\_Wildlife\MAPBOOK\_BatSurvey\mxd





## LEGEND

- FERC Project Boundary #382
- Survey Area
- Borel Canal
- Flow Direction

## Bat Habitat Suitability

- Evidence of Roosting Bats Present

\*SOURCE: HDR (2021), SoCal Edison (2021), ESRI Aerial (2021).



## BAT HABITAT SUITABILITY MAP

BOREL HYDROELECTRIC LICENSE SURRENDER PROJECT  
PAGE 16 OF 20

0 50 100 Feet  
Projection: StatePlane California V FIPS 0405 Feet  
Datum: NAD 83  
Date: 3/30/2023

Southern California Edison (SCE) has no reason to believe that there are any inaccuracies or defects with information incorporated in this work and make no representations of any kind, including, but not limited to, the warranties of merchantability or fitness for a particular use, nor are any such warranties to be implied, with respect to the information or data, furnished herein. No part of this map may be reproduced or transmitted in any form or by any means, electronic or mechanical, including photocopying and recording system, except as expressly permitted in writing by SCE.



G:\Projects\SoCal Edison\Borel\2\_Working\map\_docs\Biological\Bat\_Wildlife\MAPBOOK\_BatSurvey.mxd



**LEGEND**

- FERC Project Boundary #382
- Survey Area
- Borel Canal
- Flow Direction

**Bat Habitat Suitability**

- Non-suitable Bat Roost - No Evidence Present

\*SOURCE: HDR (2021), SoCal Edison (2021), ESRI Aerial (2021).



**SOUTHERN CALIFORNIA EDISON®**  
An EDISON INTERNATIONAL® Company

**BAT HABITAT SUITABILITY MAP**

BOREL HYDROELECTRIC LICENSE SURRENDER PROJECT  
PAGE 17 OF 20

Date: 3/30/2023

Projection: StatePlane California V FIPS 0405 Feet  
Datum: NAD 83

0 50 100 Feet





Southern California Edison (SCE) has no reason to believe that there are any inaccuracies or defects with information incorporated in this work and make no representations of any kind, including, but not limited to, the warranties of merchantability or fitness for a particular use, nor are any such warranties to be implied, with respect to the information or data, furnished herein. No part of this map may be reproduced or transmitted in any form or by any means, electronic or mechanical, including photocopying and recording system, except as expressly permitted in writing by SCE.




G:\Projects\SoCal\_Edison\Borel\Y2\_Working\map\_docs\Biological\Bat\_Wildlife\MAPBOOK\_BatSurvey.mxd



**LEGEND**

-  FERC Project Boundary #382
-  Survey Area
-  Borel Canal
-  Flow Direction

**Bat Habitat Suitability**

-  Evidence of Roosting Bats Present

\*SOURCE: HDR (2021), SoCal Edison (2021), ESRI Aerial (2021).

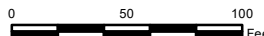


**BAT HABITAT SUITABILITY MAP**

BOREL HYDROELECTRIC LICENSE SURRENDER PROJECT  
PAGE 18 OF 20



Date: 3/30/2023



Projection: StatePlane California V FIPS 0405 Feet  
Datum: NAD 83

Southern California Edison (SCE) has no reason to believe that there are any inaccuracies or defects with information incorporated in this work and make no representations of any kind, including, but not limited to, the warranties of merchantability or fitness for a particular use, nor are any such warranties to be implied, with respect to the information or data, furnished herein. No part of this map may be reproduced or transmitted in any form or by any means, electronic or mechanical, including photocopying and recording system, except as expressly permitted in writing by SCE.





**LEGEND**

FERC Project Boundary #382

Survey Area

Borel Canal


Flow Direction

**Bat Habitat Suitability**

Non-suitable Bat Roost - No Evidence Present

\*SOURCE: HDR (2021), SoCal Edison (2021), ESRI Aerial (2021).



SOUTHERN CALIFORNIA  
**EDISON**<sup>®</sup>  
An EDISON INTERNATIONAL<sup>®</sup> Company

**BAT HABITAT  
SUITABILITY MAP**

BOREL HYDROELECTRIC LICENSE SURRENDER PROJECT  
PAGE 19 OF 20

N

W

E

S

050100  
Feet

Projection: StatePlane California V FIPS 0405 Feet  
Datum: NAD 83

Southern California Edison (SCE) has no reason to believe that there are any inaccuracies or defects with information incorporated in this work and make no representations of any kind, including, but not limited to, the warranties of merchantability or fitness for a particular use, nor are any such warranties to be implied, with respect to the information or data, furnished herein. No part of this map may be reproduced or transmitted in any form or by any means, electronic or mechanical, including photocopying and recording system, except as expressly permitted in writing by SCE.

G:\Projects\SoCal Edison\Borel\2\_Working\map\_does\Biological\Bat\_Wildlife\MAPBOOK\_BatSurvey.mxd

Copyright 2023 by Southern California Edison Company





**LEGEND**

- FERC Project Boundary #382
- Survey Area
- Borel Canal
- Flow Direction

**Bat Habitat Suitability**

- Evidence of Roosting Bats Present
- Possible Bat Roost - No Evidence Present

\*SOURCE: HDR (2021), SoCal Edison (2021), ESRI Aerial (2021).

**SOUTHERN CALIFORNIA EDISON®**  
An EDISON INTERNATIONAL® Company

**BAT HABITAT SUITABILITY MAP**

BOREL HYDROELECTRIC LICENSE SURRENDER PROJECT  
PAGE 20 OF 20

0 50 100 Feet

Projection: StatePlane California V FIPS 0405 Feet  
Datum: NAD 83

Date: 3/30/2023

Southern California Edison (SCE) has no reason to believe that there are any inaccuracies or defects with information incorporated in this work and make no representations of any kind, including, but not limited to, the warranties of merchantability or fitness for a particular use, nor are any such warranties to be implied, with respect to the information or data, furnished herein. No part of this map may be reproduced or transmitted in any form or by any means, electronic or mechanical, including photocopying and recording system, except as expressly permitted in writing by SCE.

G:\Projects\SoCal\_Edison\Borel\2\_Working\map\_docs\Biological\Bat\_Wildlife\MAPBOOK\_BatSurvey.mxd